



Courthope Road NW3

Parkheath
Sold on Service





Courthope Road, NW3
Asking Price £635,000
Share of Freehold

- A fabulous 2 double bedroom apartment
- Set on the entire first floor, 630 sq ft approx
- Impressive period conversion
- Wood flooring throughout
- Bright 15ft reception with bay sash window
- Semi open plan 13ft kitchen
- 2 double bedrooms both with built-in wardrobes
- Share of freehold
- Situated in the Mansfield Conservation area, moments from Hampstead Heath
- Ideal for South End Green, Gospel Oak and Belsize Park

Belsize Park/Hampstead
 208 Haverstock Hill
 NW3 2AG
 Sales 020 7431 1234
 Lettings 020 7431 3104
nw3@parkheath.com

South/West Hampstead
 192 West End Lane
 NW6 1SG
 Sales & Lettings
 Tel 020 7794 7111
192@parkheath.com

Kensal Rise
 54-56 Chamberlayne Rd
 NW10 3JH
 Tel 020 8960 4845
kensal@parkheath.com

Property Management
 192 West End Lane
 NW6 1SG
 020 7433 6174
pm@parkheath.com

www.parkheath.com

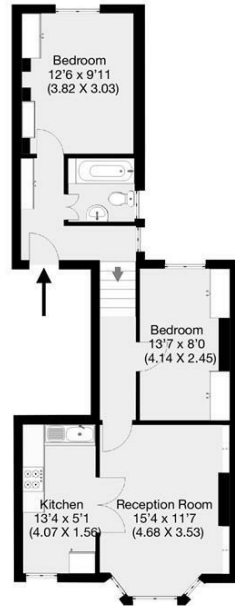
Parkheath
Sold on Service

Camden Tax band E



Courthope Road, London, NW3

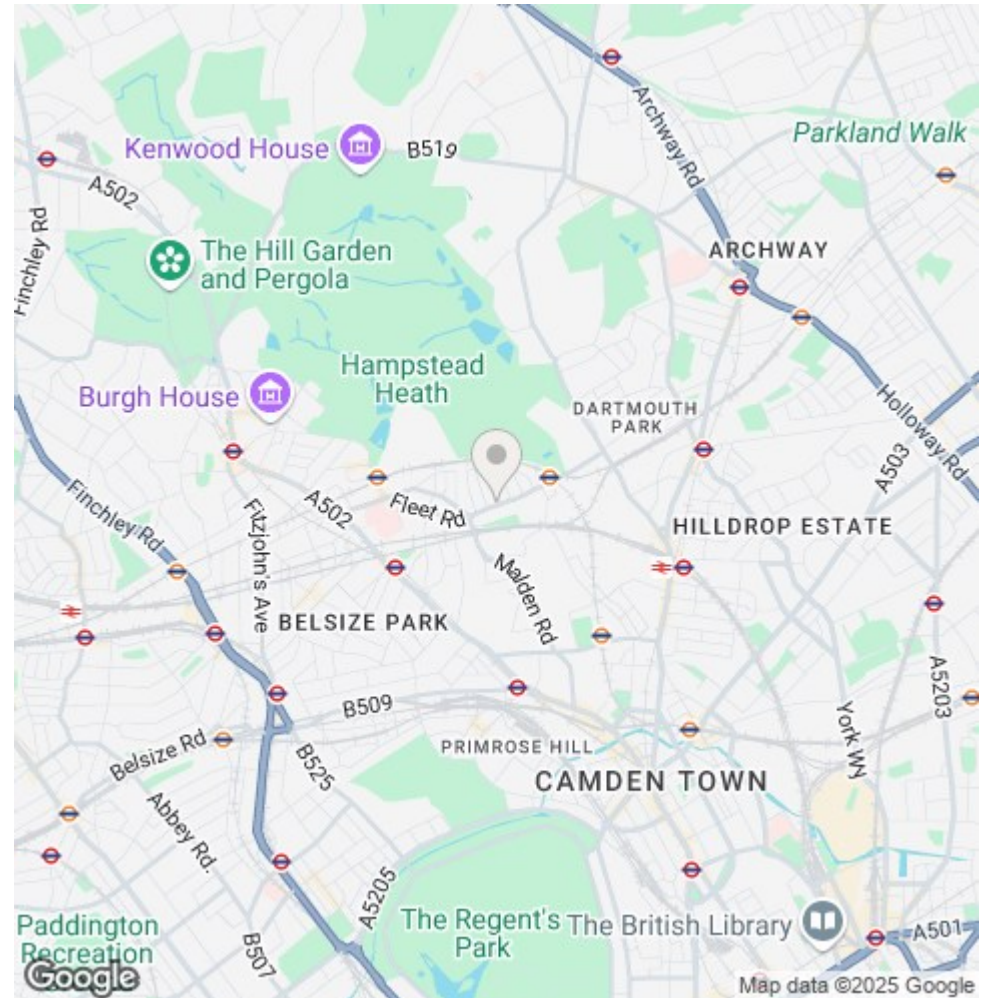
Approximate Gross Internal Area 58.50 sqm / 630 sqft



First Floor

THIS FLOOR PLAN IS PRODUCED FOR PARKHEATH SUBMITTED BY ARCHIMEDIA web: www.archi-media.co.uk

Whilst every attempt has been made to ensure the accuracy of the floor plan contained herein, measurements of doors, windows and rooms are approximate and no responsibility is taken for any error, omission or misstatement. These plans are for representation purposes only and should be used as such by any prospective buyer or lease. Specifically no guarantee is given on the gross internal floor area of the property if quoted on this plan and any figures given is initial guidance only and should be treated as such.



The particulars do not constitute part of an offer or contract. The particulars, including text, photographs and plans, are for the guidance only of prospective purchasers/tenants and must not be relied upon as statements of fact. The descriptions provided therein represent the opinion of the author and whilst given in good faith should not be construed as statements of fact. Nothing in these particulars shall be deemed a statement that the property is in good condition or otherwise or that any services or facilities are in good working order. All measurements are approximate